



Faculty of Engineering and Industrial Technology

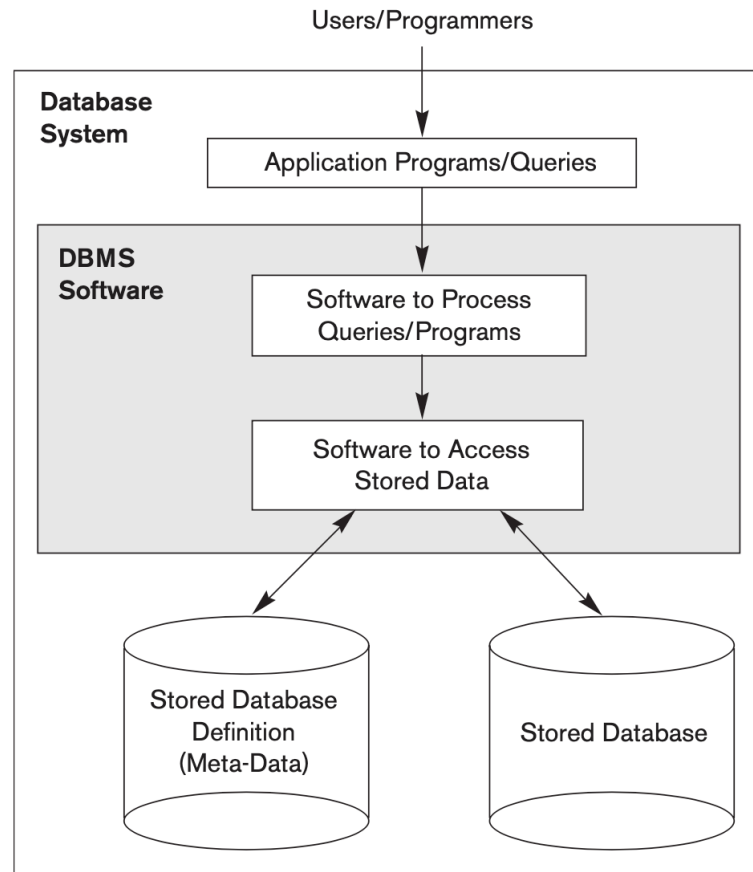
Suan Sunandha Rajabhat University

สื่อการสอน วิชา ระบบฐานข้อมูล

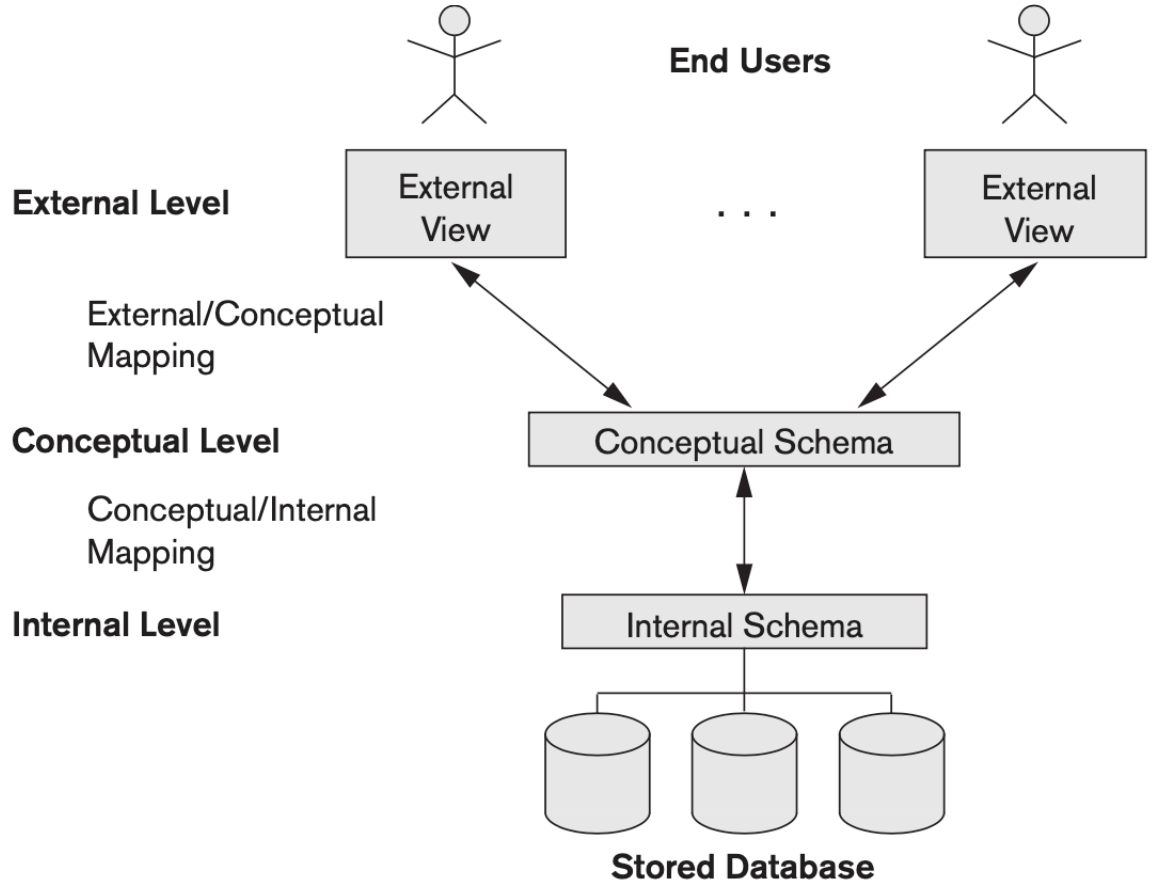
CPE3101

ผศ.ดร.พรภวิษย์ บุญศรีเมือง

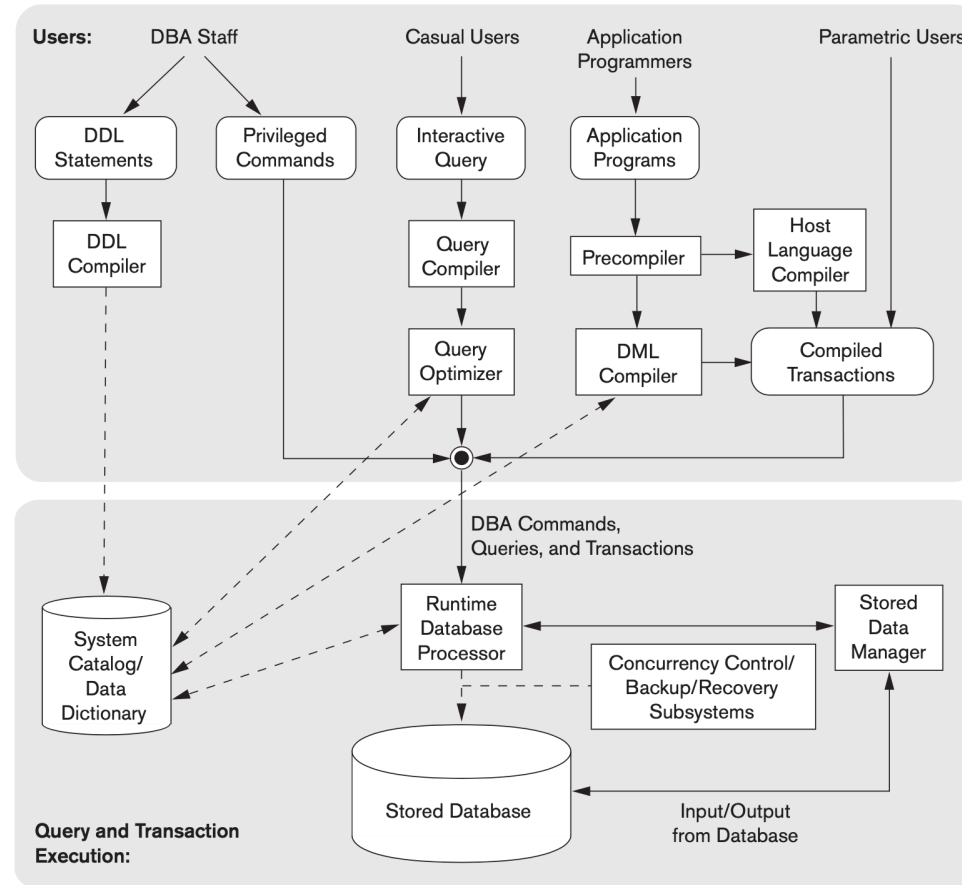
A simplified database system environment



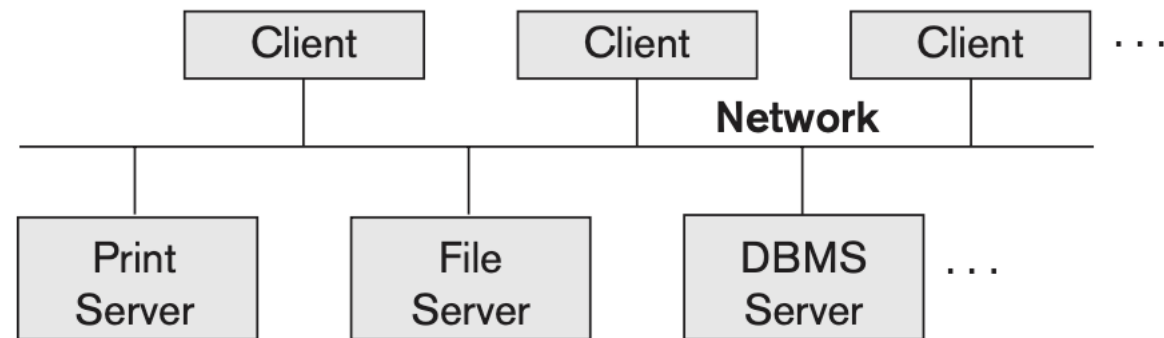
The three-schema architecture



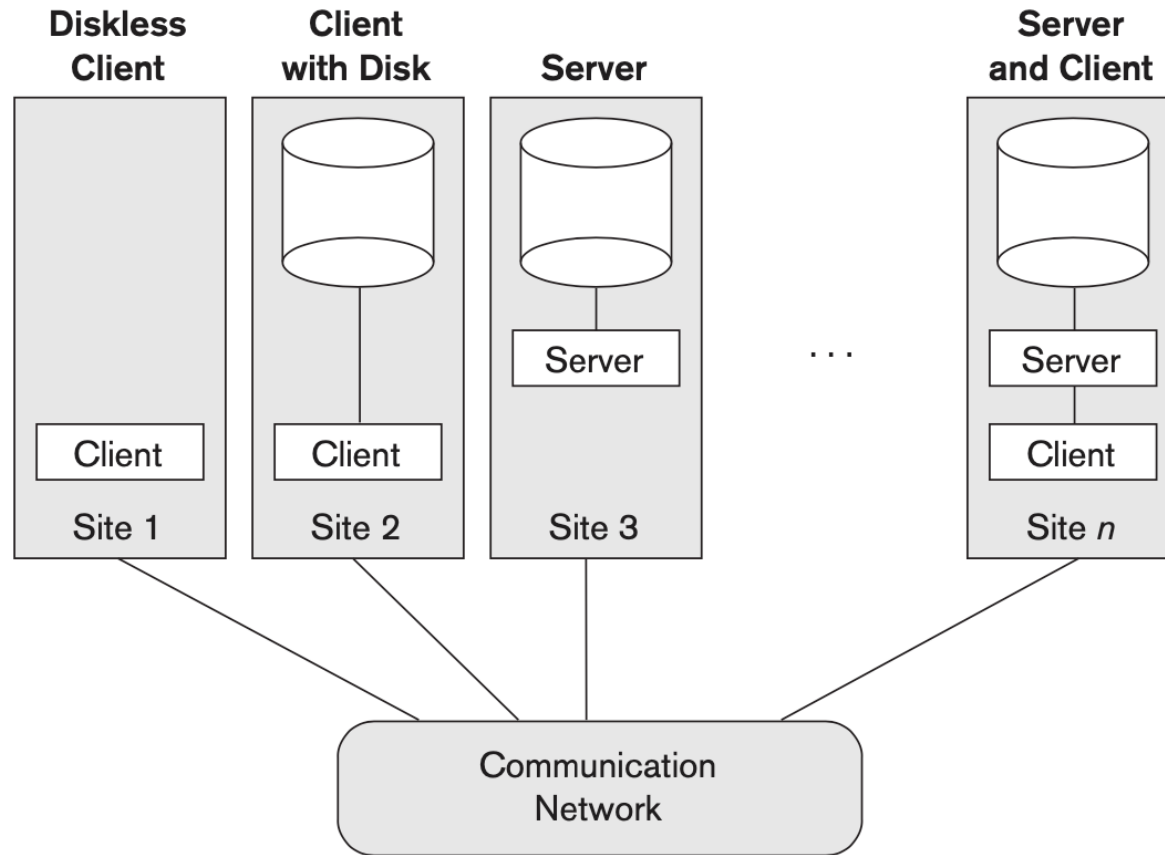
Component modules of a DBMS



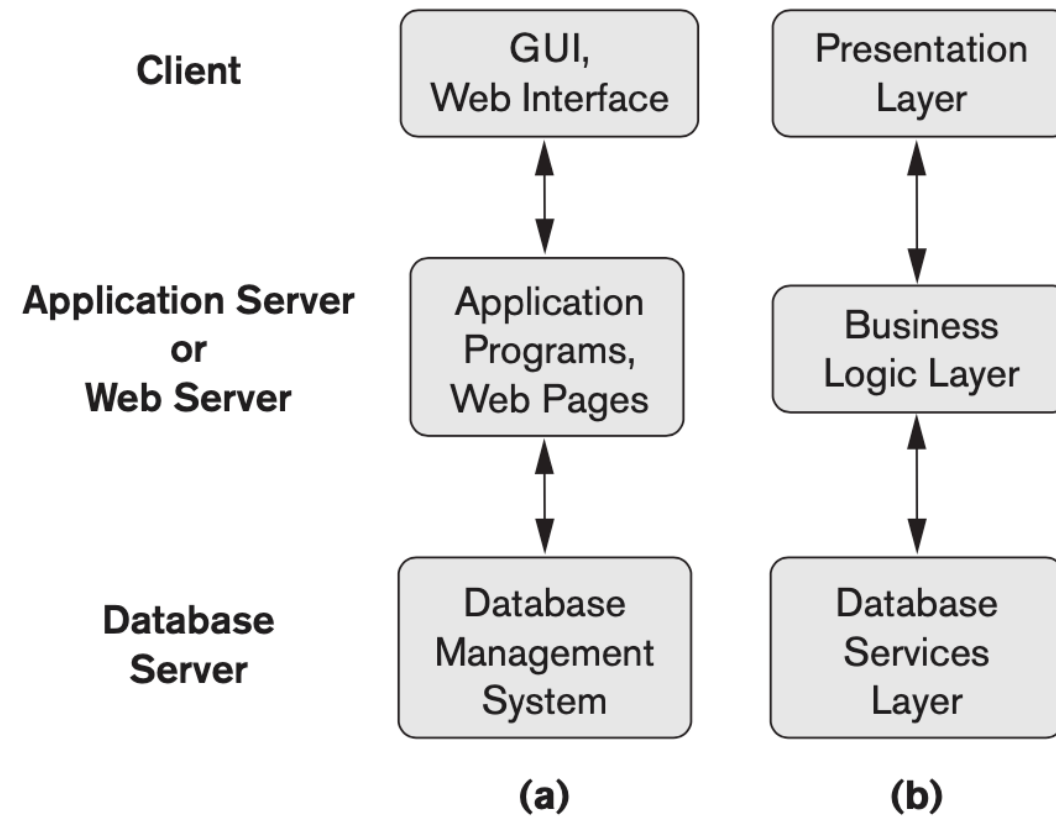
Logical two-tier client server architecture



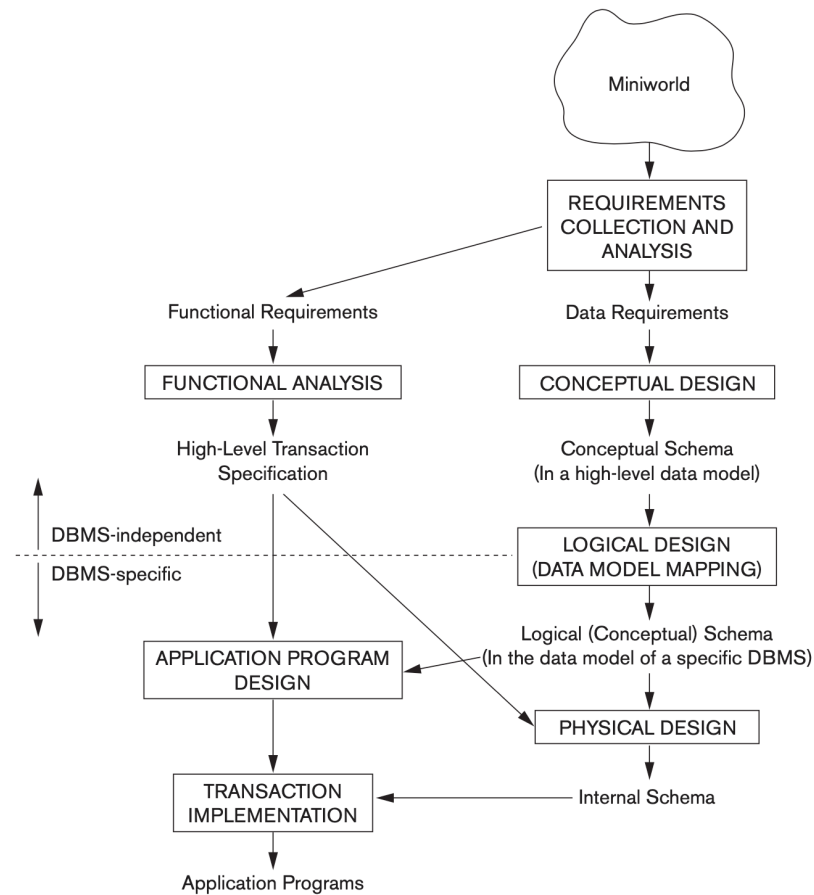
Physical two-tier client server architecture



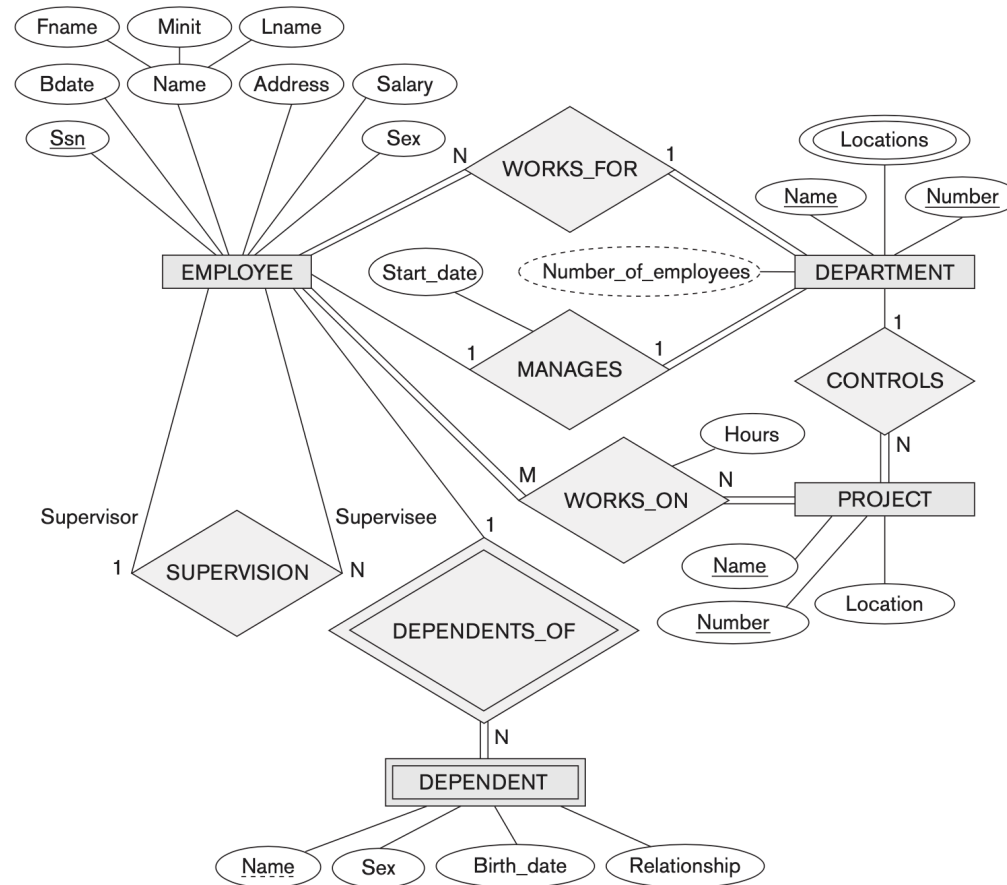
Logical three-tier client server architecture



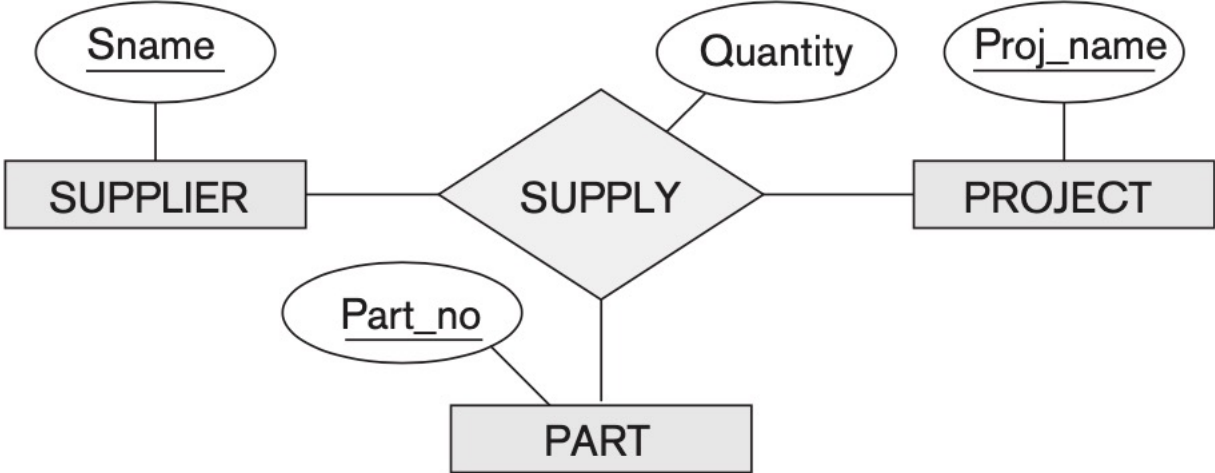
Main phases of database design



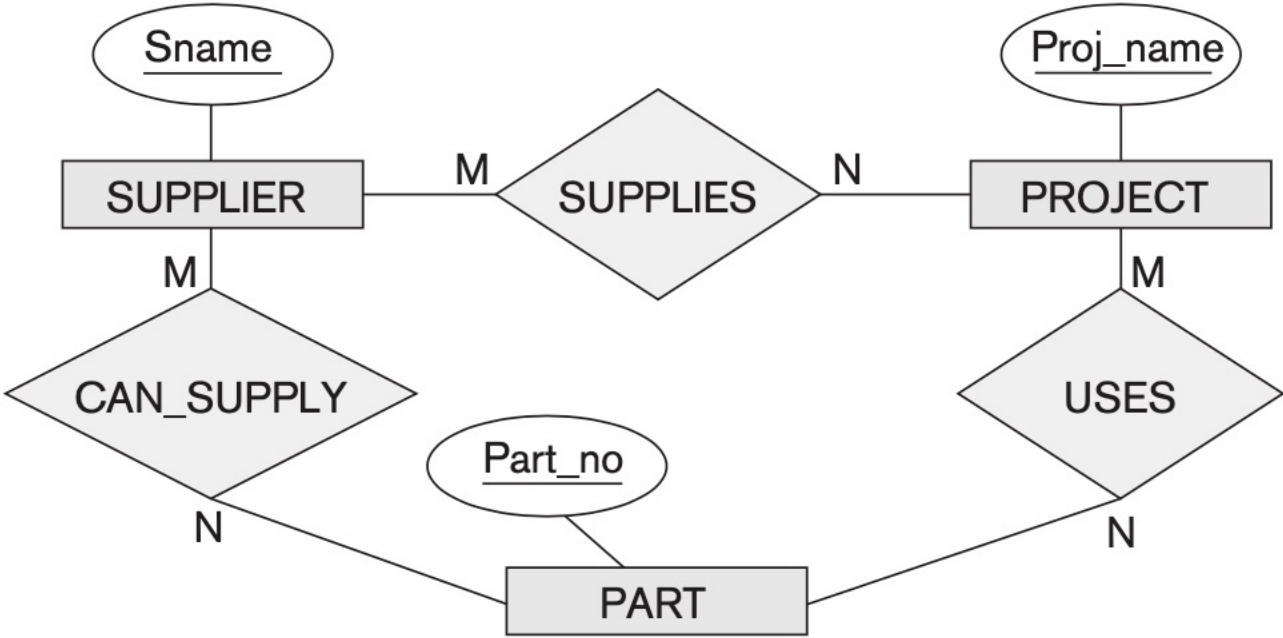
An ER schema diagram for the company database



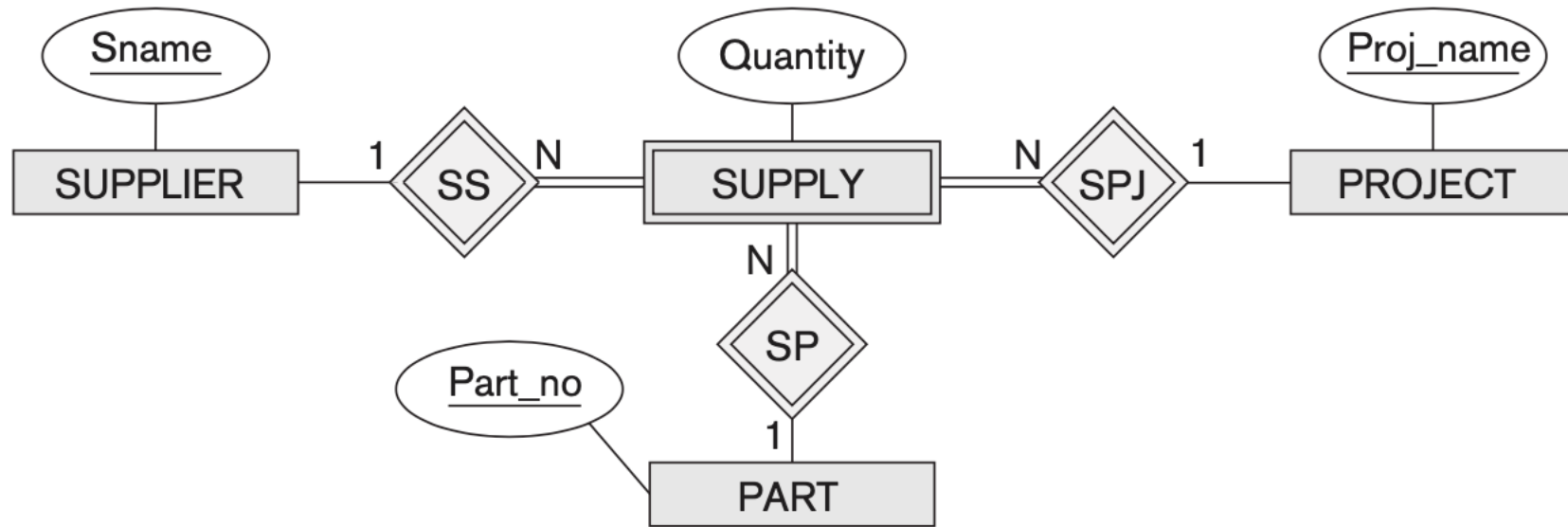
The Supply relationship



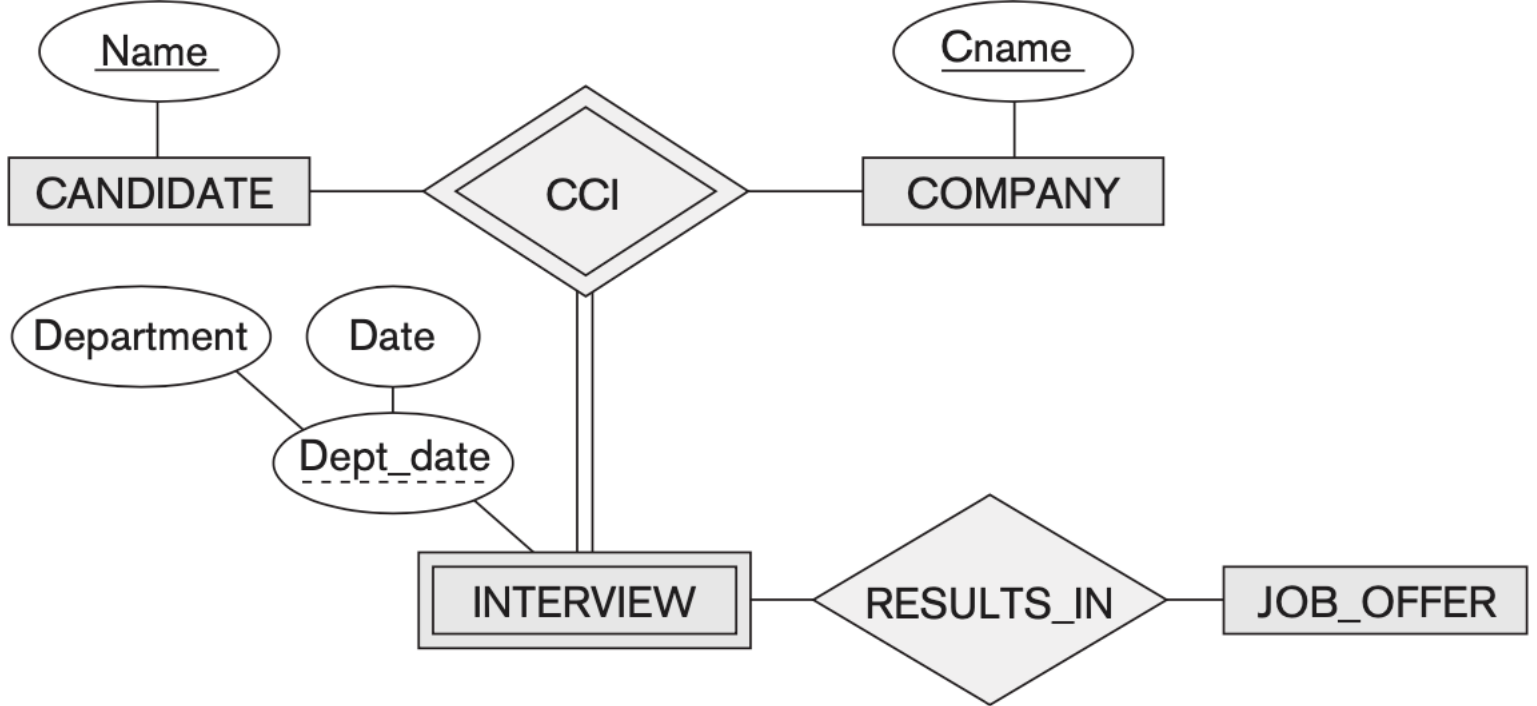
Three binary relationships



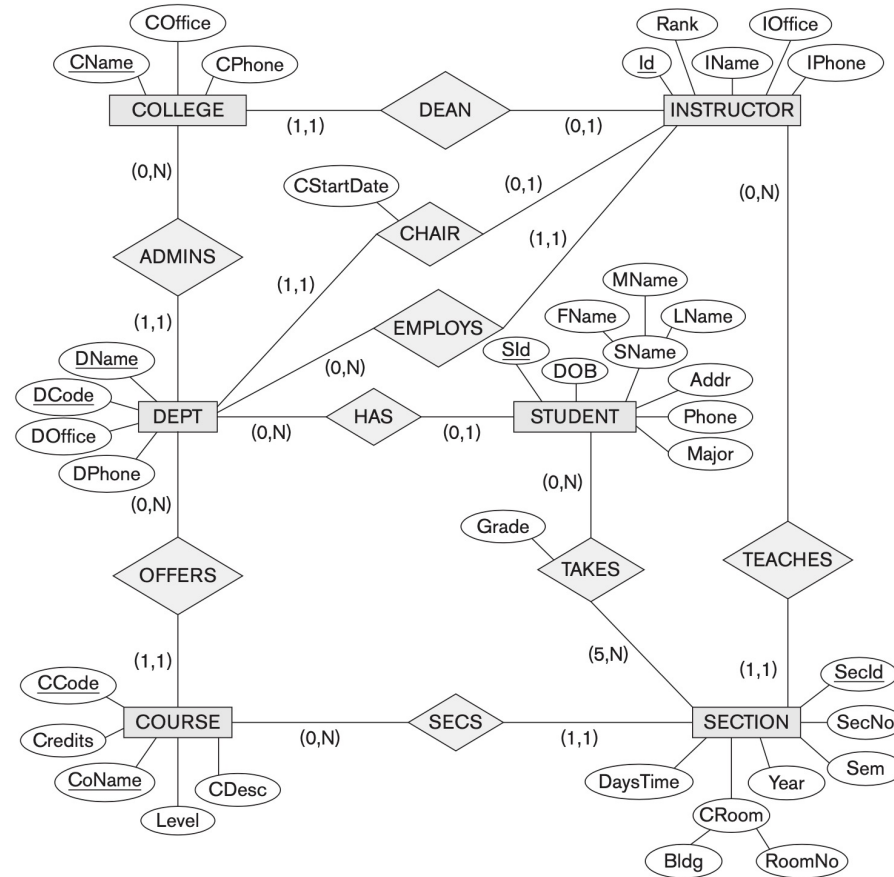
Supply represented as a weak entity type



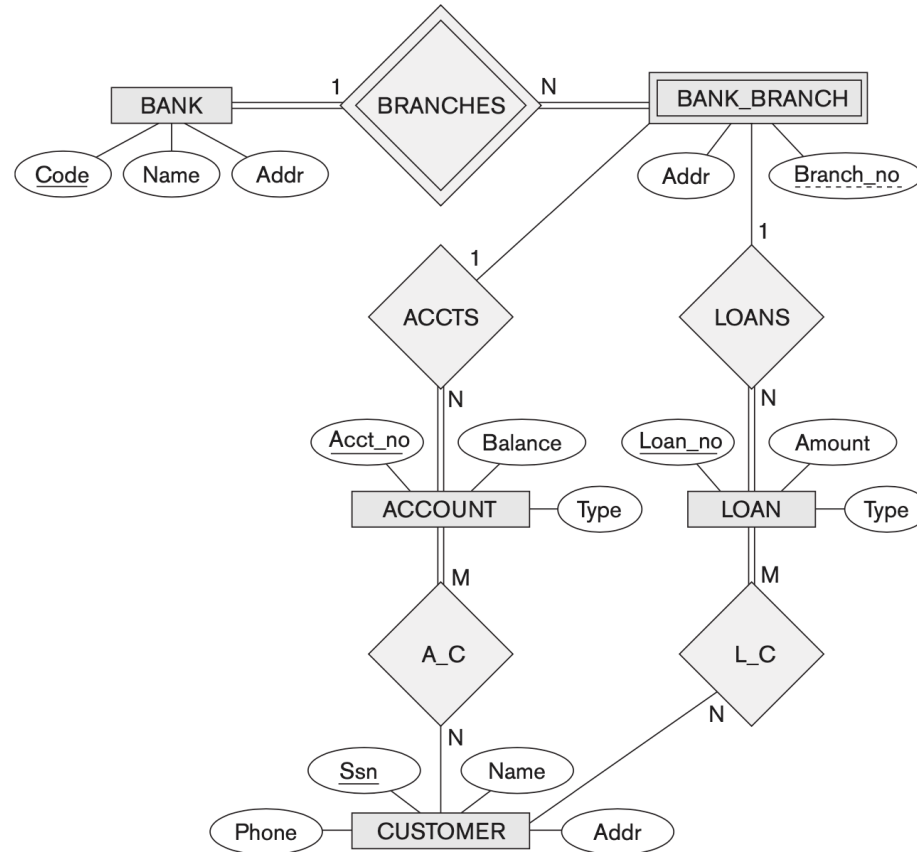
Ternary identifying relationship type



An ER diagram for a University database



An ER diagram for a BANK database



หนังสืออ้างอิง (Ref.) Requested Text.

- Ramez Elmasri and Shamkant B.Navathe “Fundamentals of Database Systems” 7th PEARSON Higher Education, 2016.